



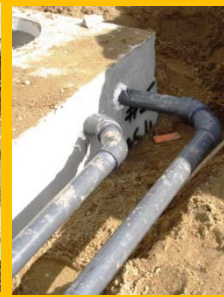
# National Carwash Solutions

716 Thompson Park Drive  
Cranberry Township, PA 10716  
info@NationalCarwashSolutions.com  
TOLL FREE 800.883.1846

## Affiliate Companies

Car Wash Technologies – www.carwashtech.com  
Pittsburgh | Columbus | Cleveland | Harrisburg

TEC Services – www.thecarwashsource.com  
Knoxville | Nashville | Raleigh



## New Investor Start Up

National Carwash Solutions knows what it takes to be profitable in the car wash industry. We've developed specific formulas for success which dictate the when, where, and how to make a profitable car wash investment regardless of format... flex serve, express exterior, or self serve.

We assist you every step of the way literally "putting" you into the carwash business and teaching you how to make money. Like Entrepreneur Coaches or Tactical Business Guides we help you decide; How should you organize your company? What should your capital structure be? Which site should you tie up? When do you need to consult attorneys and accountants, and which ones? What is the best way to mitigate your sewer tap fee? What architect and general contractor are reputable and have carwash experience in your trade area? What your service offering should? How should you price against the competition? What are the incentives being offered by the utility companies to operate Green? How should you compensate your manager? What are the key promotional elements for the grand opening?

The list of questions facing startups can be overwhelming. Our seasoned advisors will help you sort it all out and step you through the process.

- Site selection, assessment & acquisition
- Site layout and traffic flow
- Building design & equipment specifications
- New construction supervision and installation management
- Operational budget development and performance projections
- Menu and site signage design assistance
- Staff selection and training assistance
- Marketing and brand development
- Aftermarket service and supplies
- Continuous Education and Operational Training

